

Mobile Cabinets

Mobile Cabinets storage on the move.

- Welded steel construction
 - Lockable cupboards have adjustable height, galvanised steel shelf
 - Shelf capacity: 60kg UDL
 - 50kg UDL capacity, 100% extension drawers
 - Drawer blocking to prevent accidental opening
 - Push-pull handle
 - 125mm dia castor set, 2 with brake
 - Maximum combined load: 200kg
 - Overall width: 1050mm
-
- Worktop trolleys: 980mm high x 600mm deep with 30mm mpv or lino worktops
 - Top tray trolleys: 965mm high x 550mm deep with top tray & inlaid mat

Type 5428w with lino top



Type 5426w with top tray & mat



Type 5430w with mpv worktop



Drawers/cupboard	Worktop	Type
2 x 725mm cupboards each with 1 x shelf	Top tray & mat	5426w
	mpv	5427w
	lino	5428w

Drawers/cupboard	Worktop	Type
2 x 100mm & 3 x 175mm drawers 1 x 725mm cupboard with shelf	Top tray & mat	5429w
	mpv	5430w
	lino	5431w

Type 5432w with top tray & mat



Type 5437w with lino worktop



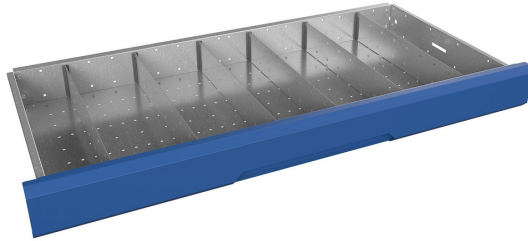
Drawers/cupboard	Worktop	Type
6 x 100mm & 1 x 125mm drawers 1 x 725mm cupboard with shelf	Top tray & mat	5432w
	mpv	5433w
	lino	5434w

Drawers/cupboard	Worktop	Type
4 x 100mm & 6 x 175mm drawers	Top tray & mat	5435w
	mpv	5436w
	lino	5437w

Mobile Cabinets

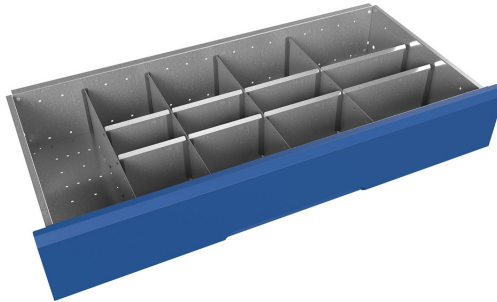
Dividers to suit 1050mm wide Cabinets

Metal dividers
7 compartments



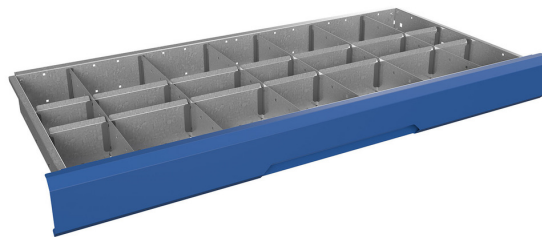
Drawer	Type
100/125mm high	5439w
175mm high	5440w

Metal dividers
13 compartments



Drawer	Type
100/125mm high	5441w
175mm high	5442w

Metal dividers
21 compartments



Drawer	Type
100/125mm high	5443w
175mm high	5444w