



Wilmat Limited
 Wilmat House, 43 Steward Street, Birmingham, B18 7AE
 T 0121 454 7514 E sales@wilmat-handling.co.uk
 www.wilmat.co.uk
 Registered in England No. 6498876

Counterbalance Electric Pallet Stacker WHMBB20 series



Standard

1.1	Manufacturer		MiMA	MiMA
1.2	Model		WHMBB20	WHMBB20SQ
1.3	Power type		Battery	Battery
1.4	Driving style		Stand on	Stand on
1.5	Rated load	Q(kg)	2000	2000
1.6	Load center	C(mm)	500	500
1.8	Wheelbase	y(mm)	1450	1450

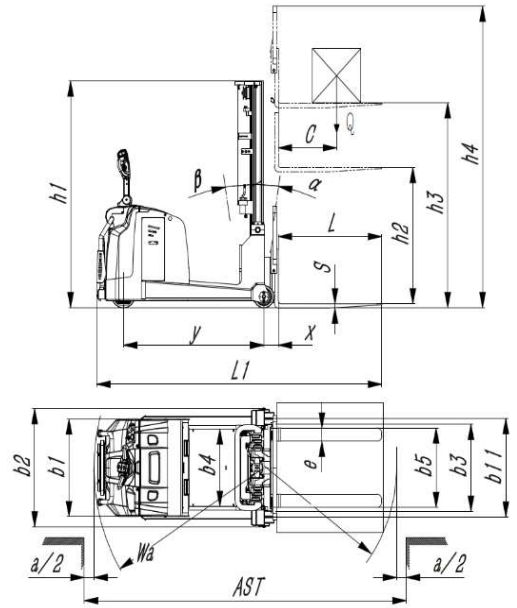
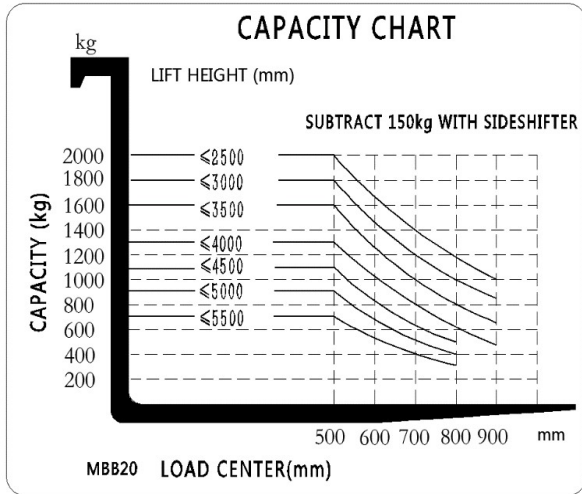
Size

2.1	Mast tilting	α/β°	2/5	2/5
2.2	Mast closed height	h1(mm)	Refer to the mast specification	Refer to the mast specification
2.3	Free lift height	h2(mm)	Refer to the mast specification	Refer to the mast specification
2.4	Lift height	h3(mm)	Refer to the mast specification	Refer to the mast specification
2.5	Mast extended height with load-backrest	h4(mm)	Refer to the mast specification	Refer to the mast specification
2.6	Overall length(pedal retracted)	L1(mm)	2990	2990
2.7	Overall width	b1/b2(mm)	900/1115	900/1115
2.8	Fork size	l/e/s(mm)	1070/122/40	1070/122/40
2.9	Fork carriage width	b3(mm)	/	/
2.1	Fork outside width	b5(mm)	264-732	264-732
2.11	Inner pitch of the Outrigger	b4(mm)	/	/
2.12	Handle height (min/max)	(mm)	1045/1465	1045/1465
2.13	Mast ground clearance	(mm)	80	80
2.14	Aisle width for pallet 1000x1200mm (C=500mm)(pedal retracted)	Ast(mm)	3150	3150
2.15	Aisle width for pallet 800x1200mm (C=600mm)(pedal retracted)	Ast(mm)	3270	3270
2.16	Turning radius (pedal retracted)	Wa(mm)	1730	1730

Others

*The length,aisle and turning radius of the whole stacker when the pedal is deployed are increased by 450mm accordingly.

Load chart	Product size
------------	--------------



Function				
----------	--	--	--	--

3.1	Driving speed, load/unloaded	km/h	5.5/6	5.5/6
3.2	Lifting speed,load/unloaded	mm/s	100/140	100/125
3.3	Lowering speed,load/unload	mm/s	100/95	90/95
3.4	Maximum climbing ability, load/unloaded (S2-5min)	%(tanθ)	6/10	6/10
3.5	Braking method		Electromagnetic	Electromagnetic

Drive				
-------	--	--	--	--

4.1	Drive motor power (S2-60min)	kw	2.5	2.5
4.2	Lift motor power, (S3-15%)	kw	3	3
4.3	Battery, voltage/rated capacity	V/Ah	24/270 (Side pull)	24/270 (Side pull)
4.4	Battery weight	kg	235	235
4.5	Steering system		Electric power steering	Electric power steering

Wheels				
--------	--	--	--	--

3.1	Wheel type		PU	PU
3.2	Load wheel size	mm	φ210x55	φ210x55
3.3	Drive wheel size	mm	φ254x100	φ254x100
3.4	Number of wheels,front/rear(x=drive wheel)		4/1x	4/1x
3.5	Wheel base, load-bearing side	b11(mm)	906	906

Weights				
---------	--	--	--	--

4.1	Service Weight (incl.battery)	kg	2550	2750
-----	-------------------------------	----	------	------

Mast specifications						
---------------------	--	--	--	--	--	--

		WHMBB20 series(with mast tilt function)					
		Single mast		Duplex mast (double cylinder)			
Model		WHMBB2016	WHMBB2025	WHMBB2030	WHMBB2035	WHMBB2040	WHMBB2045
Lift height	h3 (mm)	1600	2500	3000	3500	4000	4500
Mast closed height	h1 (mm)	2100	1770	2020	2270	2570	2820
Mast extended height	h4 (mm)	2500	3435	3935	4435	4935	5435

		MBB20SQ series(with forks tilt function)			
		WHMBB2040	WHMBB2045	WHMBB2050	WHMBB2055

Model		WHMBB2040	WHMBB2045	WHMBB2050	WHMBB2055		
Lift height	h3 (mm)	4000	4500	5000	5500		
Mast closed height	h1 (mm)	1934	2100	2266	2432		
Free lift height	h2 (mm)	989	1155	1321	1487		
Mast extended height	h4 (mm)	4935	5435	5935	6435		